

**Expanded for Winter Quarter, 2010**

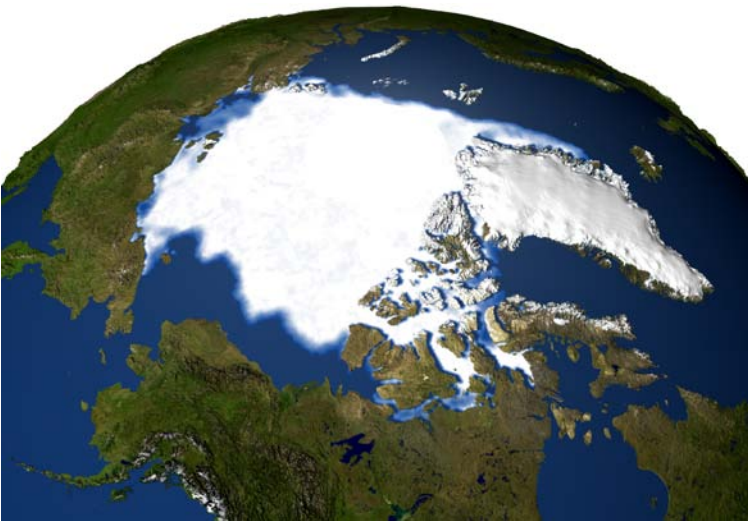
**Science & Society 25**

**CRN 60307 – 60318**

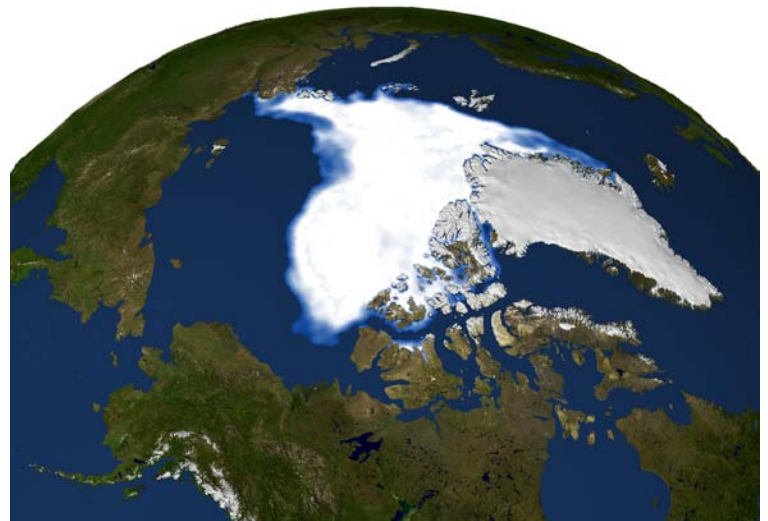
# Global Climate Change:

Convergence of Geophysical,  
Biological, & Social Sciences

**1979**



**2007**



**Minimum Sea Ice in the Arctic Ocean**

**Lectures: Tue. & Thur. 5:10 – 6:00 pm, 123 Sci Lec Hall**

**Discussion: Various times, one hour per week**

This 3-unit GE course (credit for Diversity, Science-Engineering, Social Sciences, & Writing) will explore the geophysical factors that influence climate and assess the biological and sociological consequences of climate change. Topics include methods used by different scientists, complexity of international affairs, decision making under uncertainty, and cultural views of risk.